



## Sensor Solutions

### Real-time production tracking and OEE

Get the actionable data you need on demand by enhancing your Xalt manufacturing solutions with our Xalt | Sensor solutions for Downtime Tagging, Execution & Traceability and Digital Quality Inspection. By incorporating sensors into your Xalt-powered workflows, you get data that is accurate, actionable and complete, eliminating errors inherent to manual data collection.

#### Key capabilities

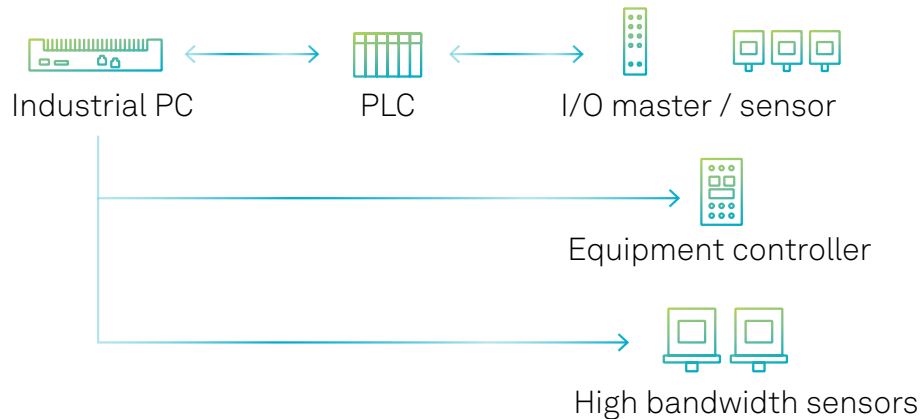
##### *Machine data collection*

- Continuously calculates OEE, which may include machine cycles, machine speed, expected output and actual output, while factoring in time not sold, planned maintenance, blocked mold cavities, downtime and more.
- Provides production data to the factory floor or to remote locations without operator interaction
- Pinpoints where losses are occurring via multiple output sensors
- Provides data that supports the instrumentation and retrofitting of existing machines
- Aggregates production data across production lines and plants to show OEE for a line, a plant or an entire organization
- Pulls data from individual sensors or from other controllers, PLCs or PCs on the production floor



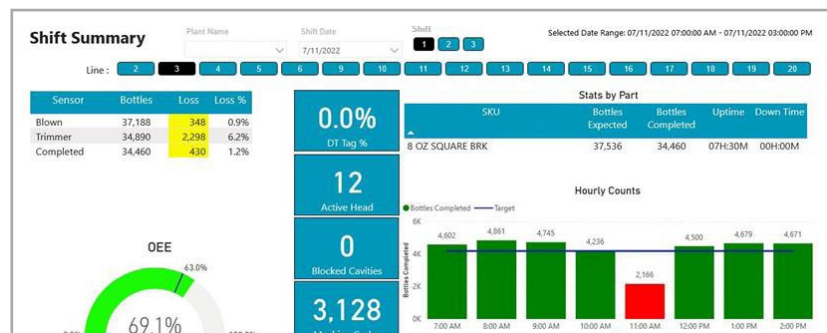
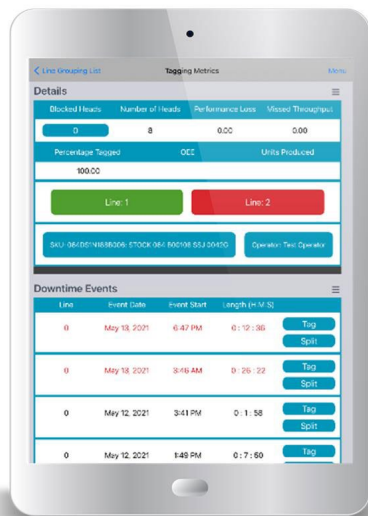
## Enterprise integration

- Provide enterprise integration solutions as a backbone for data integration
- Supports the integration of both machine data and ERP data residing in various enterprise systems, including MES and CRM systems
- Utilizes a state-of-the-art, on-premise and cloud integration platform that enables an open foundation to integrate your legacy systems with modern API-based end-points using a scalable low-code approach



## Xalt cloud – the heart of our solutions

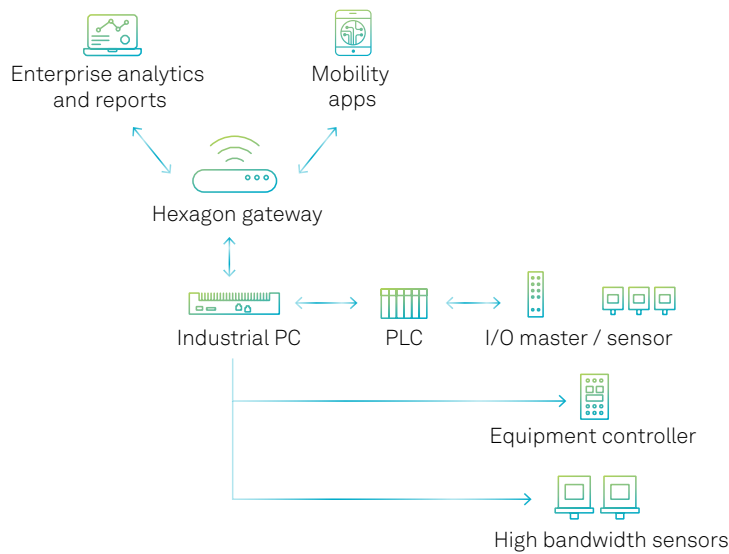
- Enables the implementation of digital workflows in the form of mobile and web applications
- Provides a low-code SaaS environment that empowers you to extend and adapt the solutions based on changing needs



To learn more about Xalt Solutions and how we can resolve your most challenging workflow processes, visit us at <http://www.hexagonxalt.com>.

## Business benefits

- Vertical solutions: Xalt provides fully vertical solutions that enable actions based on real-time insights related to production downtimes, OEE, operations, and maintenance.
- Professional consultancy: Our team offers consultancy on choosing the right sensors and PLCs, enabling digital business processes to meet the desired business outcomes (e.g., ROI, savings, quality KPIs, inventory reduction, etc.).
- Extremely fast prototyping: Thanks to our portable suitcase, installing sensors and gathering real-time machine and process data is a breeze. The sensor suitcase enables the instrumentation of any equipment or facility without having to go through time-consuming power and network installations. A fully functional prototype solution can be deployed in as little as three days.
- Single-vendor advantage: We not only provide the consultancy on designing the best architecture, but also deliver end-to-end solutions that encompass electrical instrumentation, data lake, digital workflows in the form of mobile and web apps and real-time dashboards and reports.



## Enhance your solutions with sensors

Gain the maximum benefit by deploying Xalt Sensor solutions:

- With Xalt Downtime Tagging, Xalt Sensor can determine when a system is running and when it is stopped. This data can be used to create downtime events for tagging.
- With Xalt Execution & Traceability, Xalt Sensor can determine machine cycles and calculate machine cycle time to provide expected output. These sensors can also measure machine output and identify losses in the production line.
- With Xalt Digital Quality Inspection, Xalt Sensor can provide critical measurements on parts, and check for parts present in an assembly.

## Achieve expected outcomes



**Increase capacity**



**Improve quality**



**Enhance productivity**



**Reduce downtime**



**Remove bottlenecks**



**Ensure conformance**

Hexagon is a global leader in digital reality solutions, combining sensor, software and autonomous technologies. We are putting data to work to boost efficiency, productivity, quality and safety across industrial, manufacturing, infrastructure, public sector and mobility applications.

Our technologies are shaping production and people-related ecosystems to become increasingly connected and autonomous – ensuring a scalable, sustainable future.

Hexagon (Nasdaq Stockholm: HEXA B) has approximately 21,000 employees in 50 countries and net sales of approximately 3.8bn EUR. Learn more at [hexagon.com](http://hexagon.com) and follow us @HexagonAB.

To learn more about how we help manufacturers leverage data to make improvements to processes and products, visit [www.hexagonxalt.com](http://www.hexagonxalt.com).

To learn more about Xalt Solutions and how we can resolve your most challenging workflow processes, visit us at <http://www.hexagonxalt.com>.